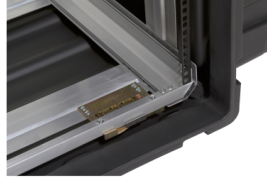




Product specification sheet

Product title | 3RR-14U24-25B SKB Removable Shock Rack 24 14HE



Description

The SKB 3RR Series represents the pinnacle of our rack cases. These shock rack cases are tougher, lighter, stronger and better than any other rack case out there in the market. The removable rack option saves time and money by eliminating the hassle of dealing with cables and screws in small, limited spaces?just take the rack out, change the equipment, and slide the rack in again. These cases are also featured-packed for ease of use, with convenient integrated wheels (24? and 30? models only), lid hangers, couplings straps, and more. All 3RR cases are independently tested and MILSTD 810-G certified. This means you can use our 3RR racks in the most extreme environments and conditions while your sensitive equipment will keep working and stays protected. And we are so convinced of the quality that we back it up with a lifetime warranty! These 24? deep rack models are suitable for IT equipment such as routers, switches, storage and communication devices. Typical applications are in military, security and broadcast, where maximum protection is needed!

Features

- Completely removable frame for easy changing of equipment saves time & money
- Meets or Exceeds MIL-STD 810G?that means you are assured of performance & quality
- IP67 rating ensures your devices stay dry no matter what weather
- Standard shock absorbers suitable for payload range of 18 to 68 kg with extra shock absorber kits available to extended payload up to 136kg if added weight is needed
- Integrated side casters eliminate heavy lifting & ensure easy transport
- Roto-molded shell ensures industry leading strength & impact resistance
- Molded in stacking ribs and lugs are designed to stack with competitive manufacturers cases
- Black powder coated stainless steel latches are recessed for protection & durability
- A built-in pressure relief valve helps to maintain an ideal environment at any altitude
- Never lose your lid again?the case housing has convenient lid hangers

Specifications

• Interior Length	61.0 cm	24.1 inch
• Interior Width	48.3 cm	19.1 inch
• Interior Height	62.2 cm	24.5 inch
• Base Depth	12.7 cm	5.0 inch
• Lid Depth	5.1 cm	2.1 inch
• Exterior Length	98.4 cm	38.8 inch
• Exterior Width	61.0 cm	24.1 inch
• Exterior Height	78.1 cm	30.8 inch
• Carton Length	101.6 cm	40.0 inch
• Carton Width	62.2 cm	24.5 inch
• Carton Depth	80.0 cm	31.5 inch
• Rack Depth	61.0 cm	24.1 inch
• Depth Front Rail to Rail	61.0 cm	24.1 inch
• Depth Front Rail to Back Lid	73.7 cm	29.1 inch
• Shipping Weight	46.0 kg	101.4 lb
• Product Weight	42.0 kg	92.6 lb
• ATA Rated		
• Rack Units: 14		
